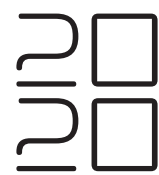


A n o x i c

8 typefaces Łąjĩň ěxťěńdėd'-Å & SMALL CAPS ▪ 904 GLYPHS



AA BB CC DD EE FF
 HH II JJ KK LL MM NN
 OO PP QQ RR TT UU
 VV WW XX YY ZZ

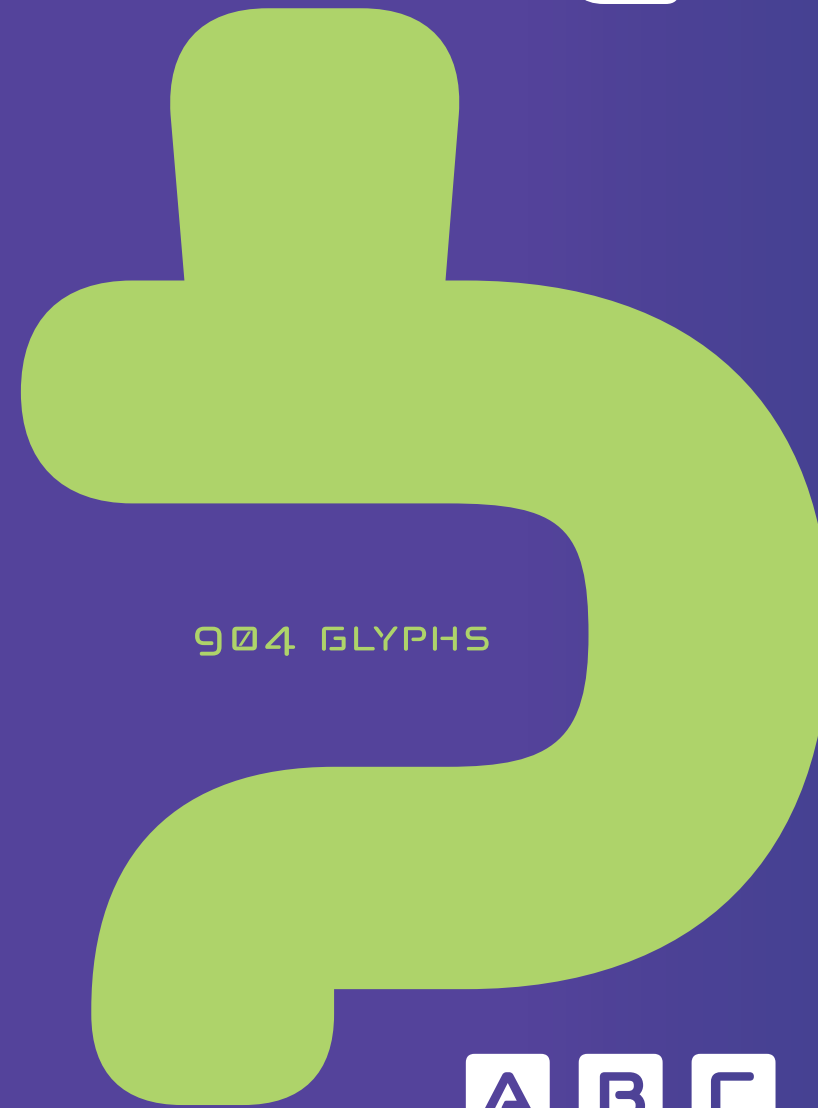
Light
 Regular
 Medium
 Bold

& SMALL CAPS

Łąfĩñ ěxtēndēd-Å & SMALL CAPS

Art is only a means to life, to the life more abundant. It is not in itself the life more abundant. It merely points the way, something which is overlooked not only by the public, but very often by the artist himself. In becoming an end it defeats itself.

Confusion is a word we have invented for an order which is not understood.



904 GLYPHS



A	B	C
A	B	C
1	2	3
1	2	3
1	2	3

1 2 3 4 5 6 7 8 9 0

↗
 abcdefhijklmn
 opqrstuvwxyz

☺ The family is only happy when he plays

A A A A A a a a a a
z z z z z z z z z z

LIGHT

A A A A A a a a a a
z z z z z z z z z z

REGULAR

A A A A A a a a a a
z z z z z z z z z z

MEDIUM

A A A A A a a a a a
z z z z z z z z z z

BOLD

SMALL CAPS

AA	BB	CC	DD	EE	FF
GG	HH	II	JJ	KK	LL
MM	NN	OO	PP	QQ	RR
SS	TT	UU	VV	W/W	XX
YY	ZZ	ØØ	ÆÆ	Œœ	ƒƒ

DIACRITICS

Á á Ó ó

Î î

Ç ç

Ù ù

Ǫ ǫ

Ǻ ǻ

Ñ ñ

Ẁ ẁ

Ĥ ĥ

Ɛ ɛ

Ø ø

Ł ł

Ř ř

Ŝ ŝ

Ž ž

Ł ł

Ȳ ȳ

Ð ð

Ő ő

Å å

NUMERALS

□ 1 2 3	∅ 1 2 3	237∅/45∅9	□ 1 2 3	⊙ ① ② ③
◻ 1 2 3	% ◻ % ◻ ◻ % ◻ % ◻ ◻	A ³ 9 ²	T ∂ ₂ ◻ ₆	≤ ≈ ≠ ≡ ≈ ≥ + - × ÷
\$ € £	f ¥ ₣	₪ ₪ ₪	฿ ₩ ₤	◆ ◻ ⊕ ⊗
฿ ₪ ₪	L ∅ e	¬ = ≠ ∫	* * ∫ ∂ *	∂ ∏ ∞

ORDINALS

No	5 th	1 st	2 nd	3 rd
4 th	1 ^{er}	2 ^e	1 ^{re}	M. ^{me}
0. ^r	M ^{lle}	XXI ^e	1. ^o	2 ^a
No	o/o	u/u	a/c	a/s



ABCDEFGHIJKLMNOPQRSTUVWXYZ

nalt, Stylistic Set (ss04, ss05)

ABCDEFGHIJKLMNOPQRSTUVWXYZ
ABCDEFGHIJKLMNOPQRSTUVWXYZ

Small Capitals (smcp) & (c2sc)

AÆBCDEFGHIJKLMNOPQÆPQRSTUVWXYZ
aaæbcdefghijklmnopqæpqrstuvwxyz

} AÆBCDEFGHIJKLMNOPQÆPQRSTUVWXYZ

Old Style Numbers (onum, lnum)

0123456789 > 0123456789

aalt, nalt, Stylistic Set (ss01, ss02, ss03)

0123456789 > 0123456789
0123456789 > 0123456789
0123456789 > 0123456789

Standar Ligatures (liga)

Keys		Keys		Keys		Keys
a#	>	👤	3/4	>	¾	
**	>	*	3/8	>	⅜	
***	>	**	5/8	>	⅝	
!!	>	!!	7/8	>	⅞	
!?	>	!?	p#z	>	Ⓟ	
?!	>	?!	b#	>	ß	
c/o	>	ç/o	y#	>	ÿ	
c/u	>	ç/u	l#	>	Ł	
a/c	>	ä/c	e#	>	€	
a/s	>	ä/s	m#	>	♻️	
o/o	>	ø	z#	>	Ż	
o/oo	>	øo	r#	>	♻️	
1/2	>	½	d#	>	☞	
1/3	>	⅓	n#	>	🏠	
1/4	>	¼	b#	>	ß	
1/8	>	⅛	- - -	>	≡	
2/3	>	⅔	=/	>	≠	

Open Type Features • The Cheat Sheet

Numerals & Ordinals

Superscript (sup) 0123456789 abcdefghijklmnopqrstuvwxyz

Numerators (numr & ordn) 0123456789 abcdefghijklmnopqrstuvwxyz

Denominators (dnom) 0123456789 abcdefghijklmnopqrstuvwxyz

Subscript (subs & sinf) 0123456789 abcdefghijklmnopqrstuvwxyz

Dynamic Fractions: Numbers & lowercase (frac)
0123456789/0123456789
abcdefghijklmnopqrstuvwxyz/abcdefghijklmnopqrstuvwxyz

Slashed Zero (zero) 0 > 0

Contextual alternates (calt, case)

(Aa)	>	(Aa)	o-e-a	>	o-E-A
[Aa]	>	[Aa]	o<e>a	>	o<E>A
{Aa}	>	{Aa}	o•e•a	>	o•E•A
o-e-a	>	o-E-A	o<e>a	>	o<E>A
o-e-a	>	o-E-A	o«e»a	>	o«E»A

Discretionary Ligatures (dlig)

Keys		Keys		Keys
A	>	À	>	À
a	>	à	>	à
?	>	?	>	?
ct	>	ct	>	ct
st	>	st	>	st
ff	>	ff	>	ff
fl	>	fl	>	fl
fi	>	fi	>	fi
fj	>	fj	>	fj
ffi	>	ffi	>	ffi
ffj	>	ffj	>	ffj
Nº	>	Nº	>	Nº
&	>	&	>	&
@	>	@	>	@
OE	>	OE	>	OE
PU#	>	PU#	>	PU#
IN#	>	IN#	>	IN#
RE#	>	RE#	>	RE#
TM#	>	TM#	>	TM#
SM#	>	SM#	>	SM#
CO#	>	CO#	>	CO#
CL#	>	CL#	>	CL#
WZ#	>	WZ#	>	WZ#
MW#	>	MW#	>	MW#
FU#	>	FU#	>	FU#

A B C D E F G H I J K L M N O P Q R S T U V W X Y Z

a b c d e f g h i j k l m n o p q r s t u v w x y z

SMALL CAPS

A B C D E F G H I J K L M N O P Q R S T U V W X Y Z @

SYSTEM NUMBERS

« 0 1 2 3 4 5 6 7 8 9 » « 0 1 2 3 4 5 6 7 8 9 »

™ ™ ☐ ☐ ☐ [®] ⓘ Ⓜ Ⓜ

↖ ↙ ↘ ↗ ↑ ↓ → ← ↔ ⇕ ● ○ ■ □ ™ ™ & &

. , : ; ' " ` # [{ () }] * ! ; ¿ ? ! ? @ / < - >



A B C D E F G H I J K L M N O P Q R S T U V W X Y Z

a b c d e f g h i j k l m n o p q r s t u v w x y z

SMALL CAPS

A B C D E F G H I J K L M N O P Q R S T U V W X Y Z @

SYSTEM NUMBERS

« 0 1 2 3 4 5 6 7 8 9 » « 0 1 2 3 4 5 6 7 8 9 »

™ ™ ☐ ☐ ☐ [®] ¡ ¤ ¤

↖ ↙ ↘ ↗ ↑ ↓ → ← ↔ ⇕ ● ○ ■ □ ß ß & &

. , : ; ' " ` # [{ () }] * ! ; ¿ ? ¡ ? @ / < - >



A B C D E F G H I J K L M N O P Q R S T U V W X Y Z

a b c d e f g h i j k l m n o p q r s t u v w x y z

SMALL CAPS

A B C D E F G H I J K L M N O P Q R S T U V W X Y Z @

SYSTEM NUMBERS

« 0 1 2 3 4 5 6 7 8 9 » « 0 1 2 3 4 5 6 7 8 9 »

™ ™ ☐ ☐ ☐ ℞ ⓘ ℥ ™ ☐

↖ ↙ ↗ ↘ ↑ ↓ → ← ↔ ↕ ● ○ ■ □ ™ ™ & &

. , : ; ' " ` # [{ () }] * ! ; ¿ ? ! ? ? @ / < - >



A B C D E F G H I J K L M N O P Q R S T U V W X Y Z

a b c d e f g h i j k l m n o p q r s t u v w x y z

SMALL CAPS

A B C D E F G H I J K L M N O P Q R S T U V W X Y Z @

SYSTEM NUMBERS

« 0 1 2 3 4 5 6 7 8 9 » « 0 1 2 3 4 5 6 7 8 9 »

™ ™ ☐ ☐ ☐ ℞ ⓘ ℳ ℹ

↖ ↙ ↘ ↗ ↕ ↔ ↠ ↡ ↢ ↣ ↤ ↥ ● ○ ■ □ ™ ™ & &

. , : ; ' " ` # [{ () }] * ! ; ¿ ? ℹ ? @ / < - >



A B C D E F G H I J K L M N O P Q R S T U V W X Y Z

a b c d e f g h i j k l m n o p q r s t u v w x y z

SMALL CAPS

A B C D E F G H I J K L M N O P Q R S T U V W X Y Z @

SYSTEM NUMBERS

« 0 1 2 3 4 5 6 7 8 9 » « 0 1 2 3 4 5 6 7 8 9 »

™ ™ ☐ ☐ ☐ ℞ ⓘ Ⓜ Ⓞ

↖ ↙ ↗ ↘ ↑ ↓ → ← ↔ ↕ ● ○ ■ □ ™ ™ & &

. , : ; ' " ` # [{ () }] * ! ; ¿ ? ! ? ? @ / < - >



A B C D E F G H I J K L M N O P Q R S T U V W X Y Z

a b c d e f g h i j k l m n o p q r s t u v w x y z

SMALL CAPS

A B C D E F G H I J K L M N O P Q R S T U V W X Y Z @

SYSTEM NUMBERS

« 0 1 2 3 4 5 6 7 8 9 » « 0 1 2 3 4 5 6 7 8 9 »

™ ™ ☐ ☐ ☐ ℞ ⓘ ℳ ℹ

↖ ↙ ↗ ↘ ↑ ↓ → ← ↔ ↕ ● ○ ■ □ β β & &

. , : ; ' " ` # [{ () }] * ! ; ¿ ? ℹ ? @ / < - >



A B C D E F G H I J K L M N O P Q R S T U V W X Y Z

a b c d e f g h i j k l m n o p q r s t u v w x y z

SMALL CAPS

A B C D E F G H I J K L M N O P Q R S T U V W X Y Z @

SYSTEM NUMBERS

« 0 1 2 3 4 5 6 7 8 9 » « 0 1 2 3 4 5 6 7 8 9 »

™ ™ © □ ▣ ℞ ⓘ ℥ ™ □

↖ ↙ ↗ ↘ ↑ ↓ → ← ↔ ↕ ● ○ ■ □ ™ ™ & &

. , : ; ' " ` # [{ () }] * ! ; ¿ ? ™ ? @ / < - >



A B C D E F G H I J K L M N O P Q R S T U V W X Y Z

a b c d e f g h i j k l m n o p q r s t u v w x y z

SMALL CAPS

A B C D E F G H I J K L M N O P Q R S T U V W X Y Z @

SYSTEM NUMBERS

« 0 1 2 3 4 5 6 7 8 9 » « 0 1 2 3 4 5 6 7 8 9 »

™ ™ ☐ ☐ ☐ ℞ ⓘ ℳ ☒

↖ ↙ ↗ ↘ ↑ ↓ → ← ↔ ↕ ● ○ ■ □ ™ ™ & &

. , : ; ' " ` # [{ () }] * ! ; ¿ ? ℞ ? @ / < - >

