

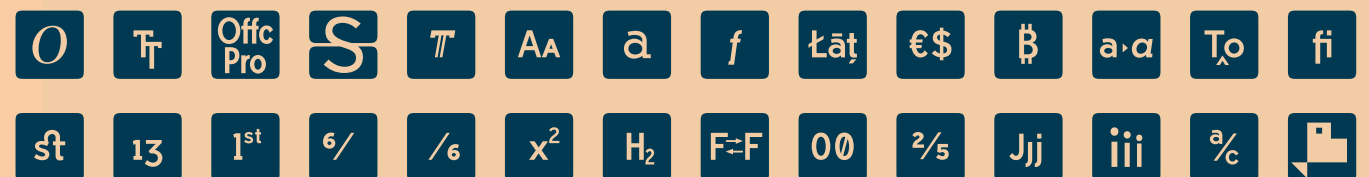
# Stoutface

728 glyphs

## Regular & SMALL CAPS



Open Type Features & LĂTIŢĂ EXTENSĂO'-Ă



by defharo.com

# Regular

# SMALL CAPS

**a æ b c e**

**f g h i j**

**k l m n**

**o ø œ**

**p q r**

**s t u v**

**w x y z**

**A Æ B C E**

**F G H I J**

**K L M N**

**O Ø Æ**

**P Q R**

**S T U V**

**W X Y Z**

**abcdefghijklmnopqrstuvwxyz/abcdefghijklmnopqrstuvwxyz**

**ABCDEFGHIJKLMNOPQRSTUVWXYZ/ABCDEFGHIJKLMNOPQRSTUVWXYZ**



# CAPITALS

A Æ B C E  
F G H I J  
K L M N  
O Ø Æ  
P Q R  
S T U V  
W X Y Z

# NUMERALS

\$ 0 1 2 3 4 5 6 7 8 9 0 €  
\$ 0 1 2 3 4 5 6 7 8 9 €  
0 1 2 3 4 5 6 7 8 9 / 0 1 2 3 4 5 6 7 8 9  
£ ¢ ₴ ¥ f B P ¢ ¢ ¢  
№ ∫ ∫ ∫ ∫ ∫ ∫ √ ∞  
+ - × ÷ ± = ≠ ~ ≈ ≠ ≈ ≡ ^  
≤ ≥ ∫ ∫ ∫ ∫ ∫ ∫ √ ∞ ∫ ∫ ∫ ∫  
% ‰



# Stoutface.alternates

## Discretionary Ligatures (#dlig, aalt)

**A C E Q G R Y &**

**a b d e f g m n p q r u y @**

**A C E G Q R Y &**

**a b d e f g m n p q r u y @**

## Geo-Icons like SMALL CAPS (#c2sc, smcp, aalt)

**ABCDEFGHIJKLMNOPQRSTUVWXYZ**

**▲●■⊗⊙⊚⊛⊜⊝⊞⊟⊠⊡⊢⊣⊤⊥⊦⊧⊨⊩⊪⊫⊬⊭⊮⊯⊰⊱⊲⊳⊴⊵⊶⊷⊸⊹⊺**

## Regular - Petite Lowercase letters & numbers (#smcp, aalt)

**abcdefghijklmnopqrstuvwxyz 0123456789**

**abcdefghijklmnopqrstuvwxyz 0123456789**

## SMALL CAPS - PETITE CAPS (#SMCP, AALT, PCAP)

**ABCDEFGHIJKLMNOPQRSTUVWXYZ 0123456789**

**ABCDEFGHIJKLMNOPQRSTUVWXYZ 0123456789**

**ff**

**LIGATURES**

**FF**

**SMALL CAPS**

<b>ff</b>	<b>ff</b>	<b>fj</b>	<b>fj</b>
<b>fi</b>	<b>fi</b>	<b>ct</b>	<b>ct</b>
<b>fl</b>	<b>fl</b>	<b>st</b>	<b>st</b>
<b>ffi</b>	<b>ffi</b>	<b>!?</b>	<b>!?</b>
<b>ffl</b>	<b>ffl</b>	<b>?!</b>	<b>?!</b>
<b>ffj</b>	<b>ffj</b>	<b>ci</b>	<b>ci</b>
<b>ft</b>	<b>ft</b>	<b>DE</b>	<b>DE</b>

<b>FF</b>	<b>FF</b>	<b>ft</b>	<b>ft</b>
<b>FI</b>	<b>FI</b>	<b>FJ</b>	<b>FJ</b>
<b>FL</b>	<b>FL</b>	<b>CT</b>	<b>CT</b>
<b>FFI</b>	<b>FFI</b>	<b>ST</b>	<b>ST</b>
<b>FFL</b>	<b>FFL</b>	<b>DE</b>	<b>DE</b>
<b>FFJ</b>	<b>FFJ</b>		



# LATIN EXTENDED-A

Regular & SMALL CAPS

Á Á á á

Î Î

Ç Ç

Ú Ú

Ġ Ġ

Ĝ Ĝ

Ñ Ñ

Ŵ Ŵ

Ĥ Ĥ

Ɔ Ɔ

Ø Ø

Ł Ł

Ř Ř

Ŝ Ŝ

Ž Ž

Ł Ł

Ŷ Ŷ

Ʀ Ʀ

Ő Ő

Å Å Å Å

# ORDINALS

## Regular & SMALL CAPS

<b>N<sup>o</sup></b>	<b>S.<sup>A</sup></b>	<b>1<sup>st</sup></b>	<b>2<sup>NO</sup></b>	<b>3<sup>SRD</sup></b>
<b>4<sup>TH</sup></b>	<b>1<sup>er</sup></b>	<b>2<sup>E</sup></b>	<b>1<sup>re</sup></b>	<b>M.<sup>ME</sup></b>
<b>D<sup>r</sup></b>	<b>M<sup>LLE</sup></b>	<b>XXI<sup>e</sup></b>	<b>1.<sup>o</sup></b>	<b>2<sup>o</sup></b>
<b>N<sup>o</sup></b>	<b>%</b>	<b>%</b>	<b>o/c</b>	<b>A/S</b>

# OTHER SIGNS

Regular & SMALL CAPS

N n

B b

P p

D d

Q q

\* \*

† ‡

< | >

( « • » )

∴ ∵

||

([{ - }])

‘ ’

¶ ° ' ∂

∟ ∟∟ ∟∟∟

©

®

™ SM

WZ ®

☺





# Stoutface • Regular & SMALL CAPS

Open Type Features • The Cheat Sheet • 728 glyphs

## Standar Ligatures (liga)

KEYS		KEYS		
<b>a#</b>	>		<b>1/2</b>	> ½
<b>p#</b>	>		<b>1/3</b>	> ⅓
<b>**</b>	>		<b>1/4</b>	> ¼
<b>***</b>	>		<b>1/8</b>	> ⅛
<b>c/o</b>	>	¢	<b>2/3</b>	> ⅔
<b>c/u</b>	>	¢	<b>3/4</b>	> ¾
<b>a/c</b>	>	¢	<b>3/8</b>	> ⅜
<b>a/s</b>	>	¢	<b>5/8</b>	> ⅝
<b>o/o</b>	>	¢	<b>7/8</b>	> ⅞
<b>o/oo</b>	>	¢	<b>b#</b>	> ₮
			<b>...</b>	> ≡
			<b>=/</b>	> ≠

## Discretionary Ligatures (dlig, aalt)

KEYS		KEYS		
<b>PU#</b>	>	®	<b>WZ#</b>	>
<b>IN#</b>	>	©	<b>CO#</b>	> ©
<b>RE#</b>	>	®	<b>CL#</b>	>
<b>TM#</b>	>	™	<b>MW#</b>	>
<b>SM#</b>	>	SM	<b>N°</b>	> №
<b>!?</b>	>	!?	<b>&amp;</b>	> &
<b>?!</b>	>	?!	<b>@</b>	> @
<b>€i</b>	>	€	<b>%</b>	> %
			<b>%oo</b>	> %oo

## Old Style Numbers (onum)

**\$0123456789€** > **\$0123456789€**